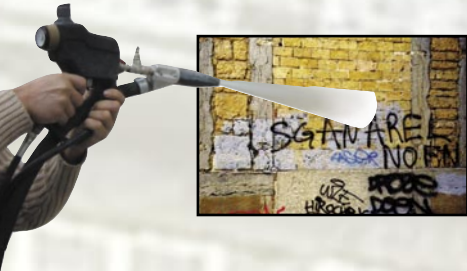


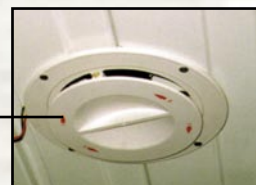
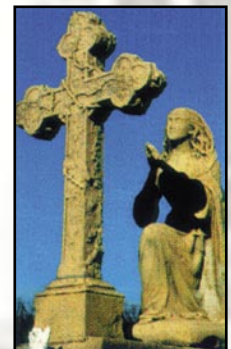
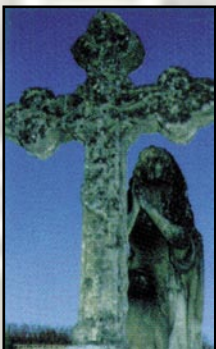
NETT WORK®

HYDRO-RUBBING® low pressure VORTEX® System

Use of the patented VORTEX® System guarantees low pressure



*The mobile anti-graffiti and
poster removal solution*
SKID V5



NETWORK[®] SELF-CONTAINED SKID

Selection of HP pressures and Hydro-rubbing[®]



12 V remote control

Safety : no water
thermal
electrical
Emergency stop

Tank : 420-litre, diamond-shaped.
Low-water safety sight gauge
and 3/4" immersed suction tube.

Hydro-rubbing[®]

- 60-litre tank with air filter and dryer.
- Set of three 2.5 m air/granular material, control, water hoses (possibility of adding extensions up to 75 m).
- Remote control handle (Vortex[®] nozzle).

Frame: Single-piece including supporting structure, water tank, Hydro-rubbing[®], hose support 1820 mm long x 1390 mm wide x 1400 mm high. 2.5 mm stainless steel structure.

HP pump: Flow rate 21 litres/min at 200 bars max.



HP winder :

Automatic return of 20 m of 5/16 hose with adjustable HP nozzle

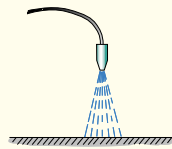


Provision for engine oil and screw oil

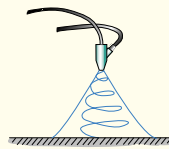


Draining and water level accessible

Vortex[®] technique



Conventional blast



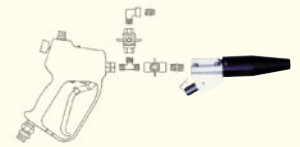
Vortex[®] projection

The Vortex[®] effect is a patented pneumatic low-pressure rotational blast system (between 0.5 and 1.5 bars on the surface).

An air-water-soft micro granular material mix is created in the mixing chamber and expelled in a homogenous vortex called the blast cone.

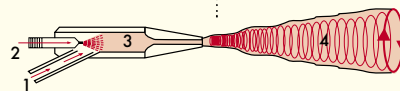
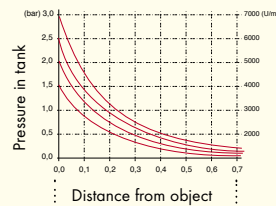
The mix laterally and gently "hydro-rubs" the surface without altering the support.

Remote control handle for power, On/Off, water spray or rinsing flow rate.



Installation in vehicle

- Rear door/tailgate : 1400 mm wide
- Wheel clearance: 1250 mm minimum
- Capacity : 1500-1800 kg



Turbo.2 Vortex[®] nozzle

All the components of this vortex nozzle are interchangeable enabling optimal use of the assembly.

Motorisation

- Flow rate: 4,3 m³/min
- 1 air outlet for accessories (spray, vacuum cleaner, pneumatic drill, etc.)
- Drive motor: Deutz F3M2011F
- Power: 31,5 Kw
- Rotational speed range: 1700-2800 rpm
- Number of cylinders: 3 x 2033 cm³
- Tank autonomy: 8 working hours
- Typical acoustic pressure level at position of operator as per PN8 NTC 2.2 LPA: 91 dB(A)

Capacity

- Capacity m²/day : 50-150 m²/day
- 1 autonomous operator
- Average consumption of granular material/sq. metre of graffiti : 1 to 2 kg
- Average fuel consumption/day : 39 litres
- Life at 100% nozzle efficiency : 25 T

**NETT
WORK[®]**

For further information :

NETWORK[®] - CP 160
CH - 1233 BERNEX
Tel. : +41 (0)22 777 27 22
Fax : +41 (0)22 777 27 20
Email : commercial@network.ch
www.network.ch

Options

- 220 V generator
- Ventilation / air exhaust kit
- Hot water boiler
- Pneumatic vacuum cleaner
- Pneumatic sprayer (products for protection)
- Retention tanks
- Dome floor stripper 600 mm
- Anti-chewinggum steam lance
- Lance and Sandblasting accessories
- Hydrosandblasting (Lance)