

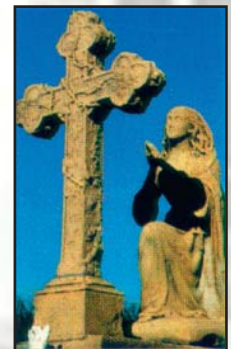
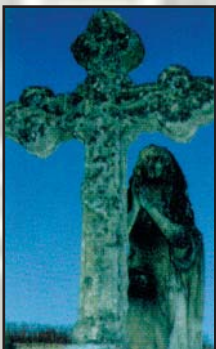
# NETT WORK®

HYDRO-RUBBING® low pressure VORTEX® System

Use of the patented VORTEX® System guarantees low pressure



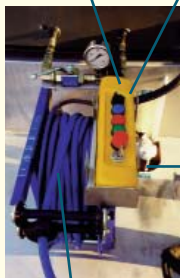
The mobile anti-graffiti and  
poster removal solution  
**SKID V5**



Use of our registered brandnames HYDRO-RUBBING®, VORTEX® and NETWORK®, is only permitted with use of our material.

# NETWORK<sup>®</sup> SELF-CONTAINED SKID

Selection of HP pressures and Hydro-rubbing<sup>®</sup>



12 V remote control

Safety : no water thermal electrical  
Emergency stop

**Tank** : 420-litre, diamond-shaped. Low-water safety sight gauge and 3/4" immersed suction tube.

**Hydro-rubbing<sup>®</sup>**

- 60-litre tank with air filter and dryer.
- Set of three 25 m air/granular hoses (possibility of adding extensions up to 75 m).
- Remote control handle (Vortex<sup>®</sup> nozzle).

**HP winder :**

Automatic return of 20 m of 5/16 hose with adjustable HP nozzle



Provision for engine oil and screw oil



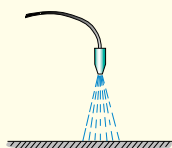
Draining and water level accessible



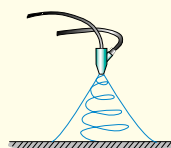
**Frame:** Single-piece including supporting structure, water tank, Hydro-rubbing<sup>®</sup>, hose support 1820 mm long x 1390 mm wide x 1400 mm high. 2.5 mm stainless steel structure.

**HP pump:** Flow rate 21 litres/min at 200 bars max.

## Vortex<sup>®</sup> technique



Conventional blast



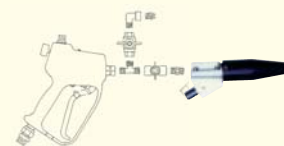
Vortex<sup>®</sup> projection

The Vortex<sup>®</sup> effect is a patented pneumatic low-pressure rotational blast (between 0.5 and 1.5 bars on the surface).

An air-water-soft micro granular material mix is created in the mixing chamber and expelled in a homogenous vortex called the blast cone.

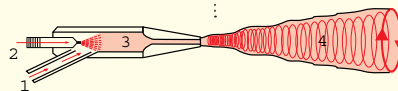
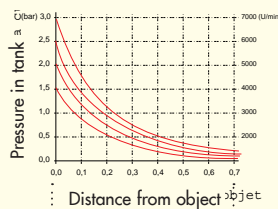
The mixture gently cleans the surface by "Hydro-rubbing"<sup>®</sup> attacking it laterally, without damaging the base.

Remote control handle for power, On/Off, water spray or rinsing flow rate.



## Installation in vehicle

- Rear door/tailgate: 1400 mm wide
- Wheel clearance: 1250 mm minimum
- Capacity : 1500-1800 kg



Turbo.2 Vortex<sup>®</sup> nozzle

All the components of this vortex nozzle are interchangeable enabling optimal use of the assembly.

## Motorisation

- Flow rate: 4,3 m<sup>3</sup>/min
- 1 air outlet for accessories (spray, vacuum cleaner, pneumatic drill, etc.)
- Drive motor: Deutz F3M2011F
- Power: 31,5 Kw
- Rotational speed range: 1700-2800 rpm
- Number of cylinders: 3 x 2033 cm<sup>3</sup>
- Tank autonomy: 8 working hours
- Typical acoustic pressure level at position of operator as per PN8 NTC 2.2 LPA: 91 dB(A)

## Capacity

- Capacity m<sup>2</sup>/day : 50-150 m<sup>2</sup>/day
- 1 autonomous operator
- Average consumption of granular material/sq. metre of graffiti : 1 to 2 kg
- Average fuel consumption/day : 39 litres
- Life at 100% nozzle efficiency : 25 T

**NETT  
WORK.**

For further information :

NETWORK<sup>®</sup> - CP 160

CH - 1233 BERNEX

Tél. : +41 (0)22 777 27 22

Fax : +41 (0)22 777 27 20

Email : commercial@network.ch

www.network.ch

## Options

- 220 V generator
- Ventilation / air exhaust kit
- Hot water boiler
- Pneumatic vacuum cleaner
- Pneumatic sprayer (products for protection)
- Retention tanks
- Dome floor stripper 600 mm
- Anti-chewing gum steam lance
- Lance and Sandblasting accessories
- Hydrosandblasting (Lance)