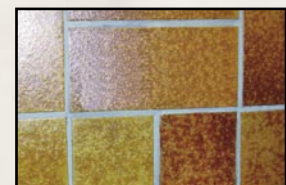
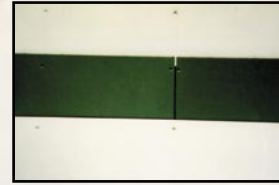


NETT WORK®

HYDRO-RUBBING® low pressure VORTEX® System

Use of the patented VORTEX® System guarantees low pressure

*The mobile anti-graffiti solution in a compact version :
Va Miniskid*



Chassis:

Monobloc, including bearer frame, water tank, Hydro-rubbing® support and pipework support.
1400 x 1000 x 1080 mm
(l x w x h).
25/10° stainless steel structure.

Tank:

240 litres with filling in DN40 or with bare hose. External tank drainage.



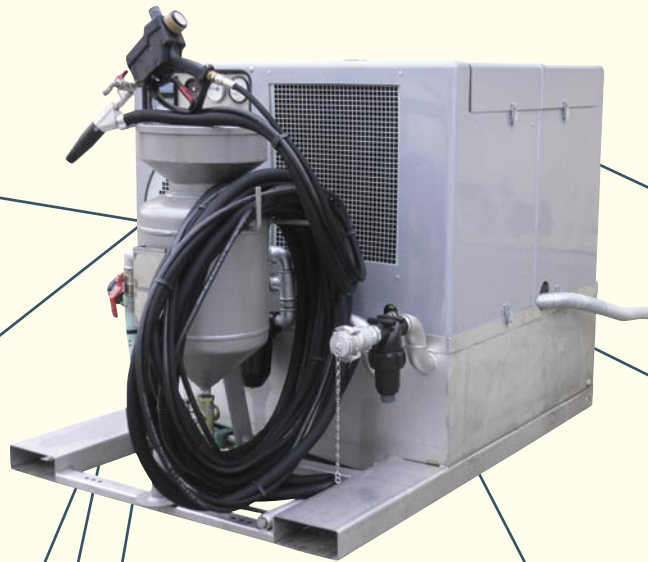
Tank inspection flap and low water level safety device



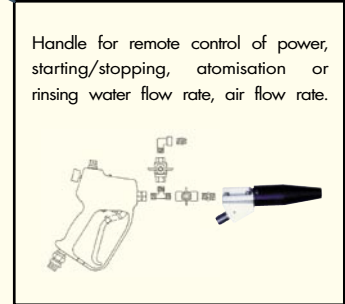
80µm water filter



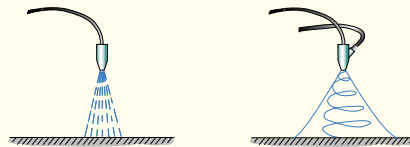
Cyclone air dryer with ceramic membrane



The unit's control and monitoring components (starter, safety lights, ignition key, "knock-off" stop button, timer and pressure gauge)



The Vortex® technique



Conventional spraying Vortex® spraying

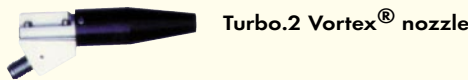
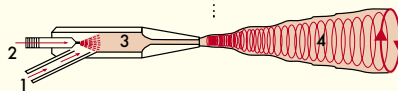
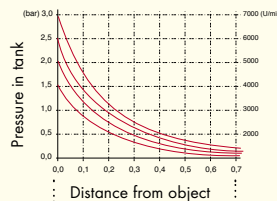
The Vortex® effect is a patented low-pressure rotation pneumatic spraying process (between 0.5 and 1.5 bars on the surface).

An air/water/soft micro-aggregate mixture is created in a mixing chamber and expelled in a homogeneous swirling flow, called a spray cone.

The mixture "hydro-rubs" the surface by gently attacking it laterally, without damaging the base.

Hydro-rubbing®:

- 25-litre tank with 5 µm air filter
- 12.50 m set of 3 pipes (25m extension capability)
- control handle
- Vortex® nozzle



Turbo.2 Vortex® nozzle



Installation in vehicle

- Capacity: 680 kg minimum
- Width: 1050 mm minimum
- Length: 1650 mm minimum

Drive

- 2.1 m³/min flow rate
- 1 air outlet for accessories
- Drive motor: FOCS 1003 Diesel
- Motive power: 17,7 kW (27 HP)
- Rotation range: 1700-3400 rev/min
- Number of cylinders: 3 x 1028 cm³
- Reservoir operating capacity: 8 hours' work
- Double fan
- Air cooler and separator
- Safety devices per sensor (temperature and water level)
- Sound pressure level: 76 dB(A)

Each component of this Vortex® nozzle is interchangeable, end enables optimum use of the assembly.



For any additional information:

NETWORK® - CP 160

CH - 1233 BERNEX

Tel. : +41 (0)22 777 27 22

Fax : +41 (0)22 777 27 20

Email : commercial@network.ch

www.network.ch

Performance

- Performance m²/day: 30-80 m²/day
- 1 stand-alone operator
- Average aggregate consumption/m² of graffiti: 1 to 2 kg
- Average fuel consumption/day: 35 litres
- Service life at 100% efficiency of the nozzle: 25 T